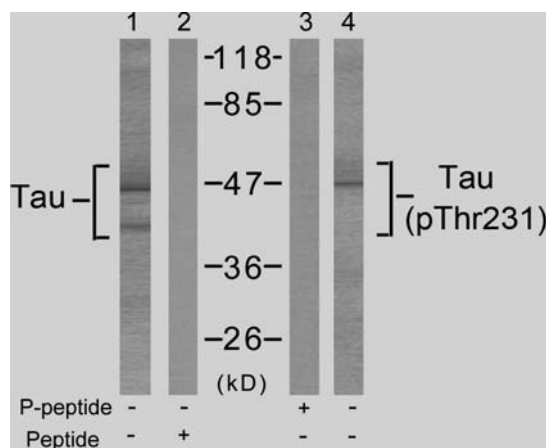


Rabbit anti Tau (pThr231)

- Catalog Number:** pAP11110
Amount: 100µl (for 10 Western Blotting)
Form of Antibody: Rabbit IgG in phosphate buffered saline (without Mg²⁺ and Ca²⁺), pH 7.4, 150mM NaCl, 0.02% sodium azide and 50% glycerol.
Storage/Stability: Store at -20°C/1 year
Immunogen: The antiserum was produced against synthesized phosphopeptide derived from human Tau around the phosphorylation site of threonine 231 (V-R-T^P-P-P).
Purification: The antibody was affinity-purified from rabbit antiserum by affinity-chromatography using epitope-specific phosphopeptide. The antibody against non-phosphopeptide was removed by chromatography using non-phosphopeptide corresponding to the phosphorylation site.
Specificity/Sensitivity: Tau (phospho-Thr231) antibody detects endogenous levels of Tau only when phosphorylated at threonine 231.
Reactivity: Human, Mouse, Rat
Applications: WB: 1:1000
Swiss-Prot No. : P10636
References: Yen S.H.et.al. (1997) Neurochem. 69:1709-1719.
 Beausoleil S.A.et.al. (2004) Proc. Natl. Acad. Sci. U.S.A. 101:12130-12135.
 Wintjens R.et.al. (2001) Biol. Chem. 276:25150-25156.
 Babu J.R.et.al.(2005) Neurochem. 94:192-203.
 Goedert M., Spillantini M.G. (2000) Biochim. Biophys. Acta 1502:110-121.



Western blot analysis of extract from mouse brain tissue using Tau (Ab-231) Antibody (AP21099, Lane 1 and 2) and Tau (phospho-Thr231) antibody (pAP11110, Lane 3 and 4).

For Research Use Only

Contact & Ordering Information: Angio-Proteomie, 11 Park Drive, Suite 12, Boston, MA 02215, USA. Fax: (480) 247-4337, angioproteomie@gmail.com